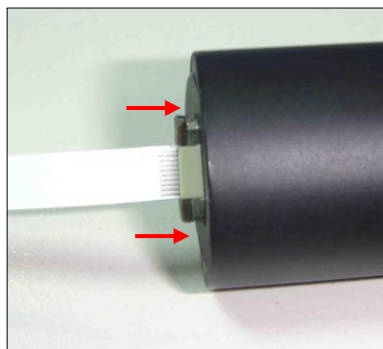
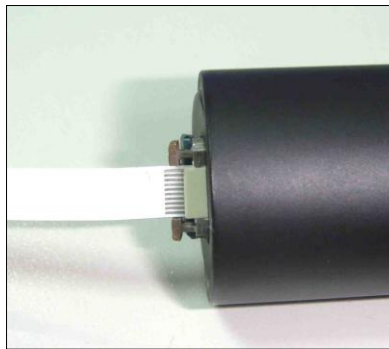
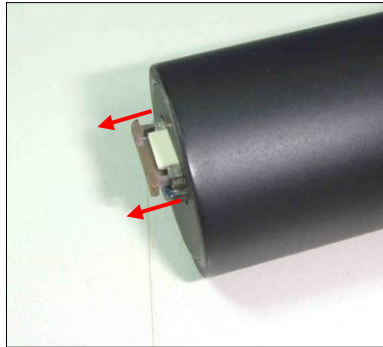


# FM Reader User Manual

1. Connect the fiscal memory to the FM Reader as follows:



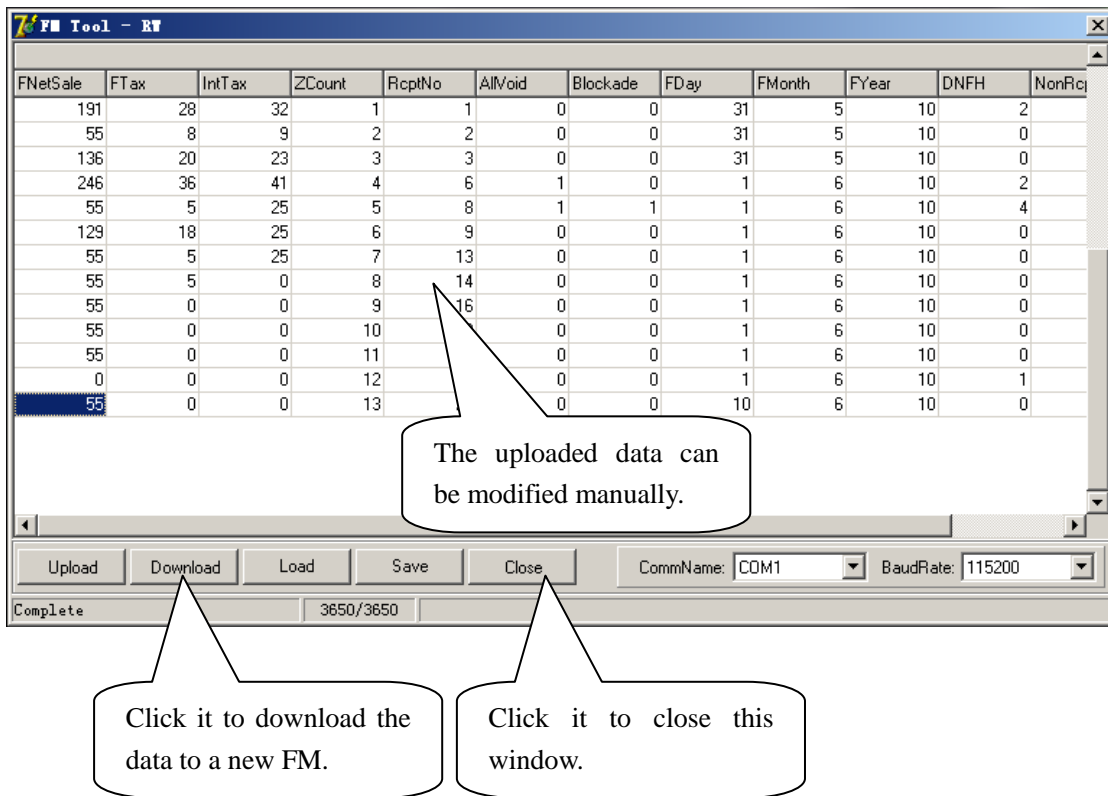
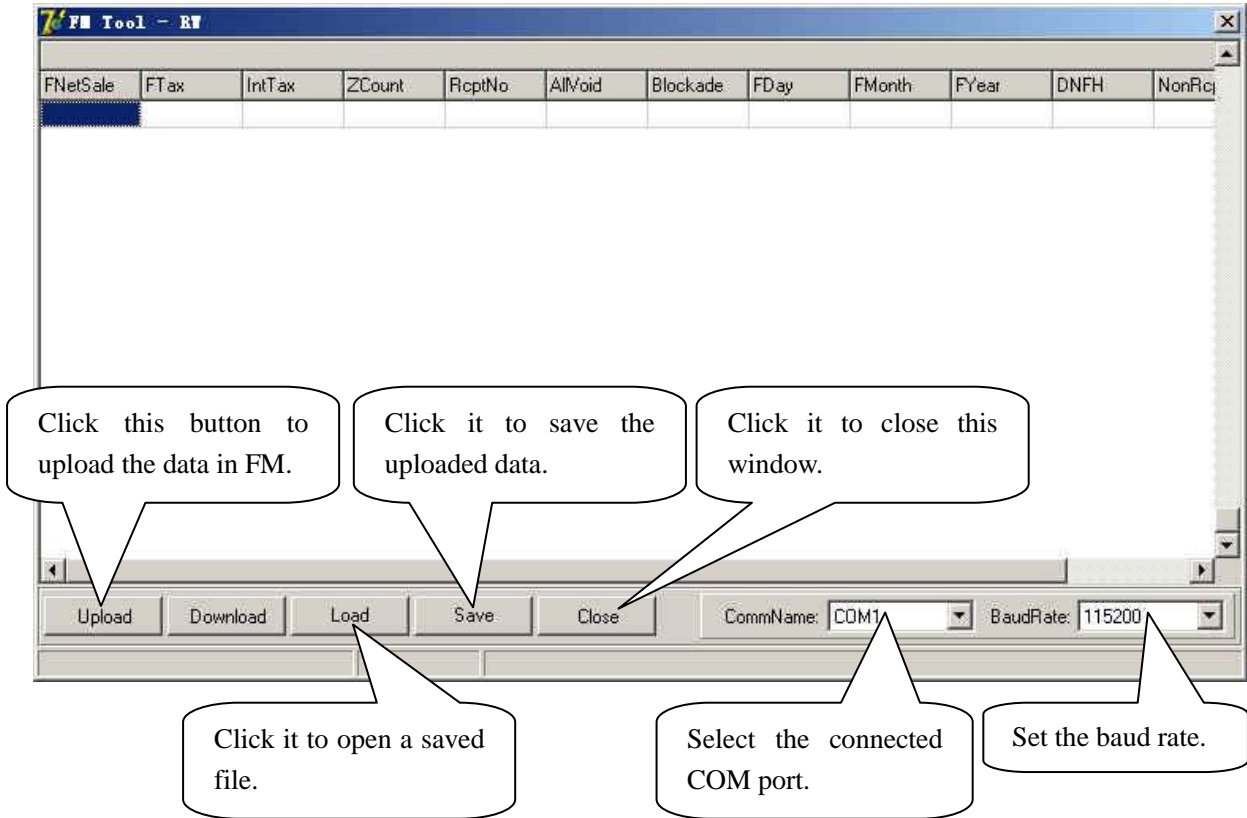
2. Use the following cable to connect the FM Reader to PC:



Connect to USB port of PC

Connect to D9 port of PC

3. Run the file 'fiscal.exe' in attached CD to enter the following interface:



**Note: the data can only be downloaded to the new fiscal memory.**